

LJSG

SLOVENJ GRADEC, SLOVENIA

VFR

15 Aug 06

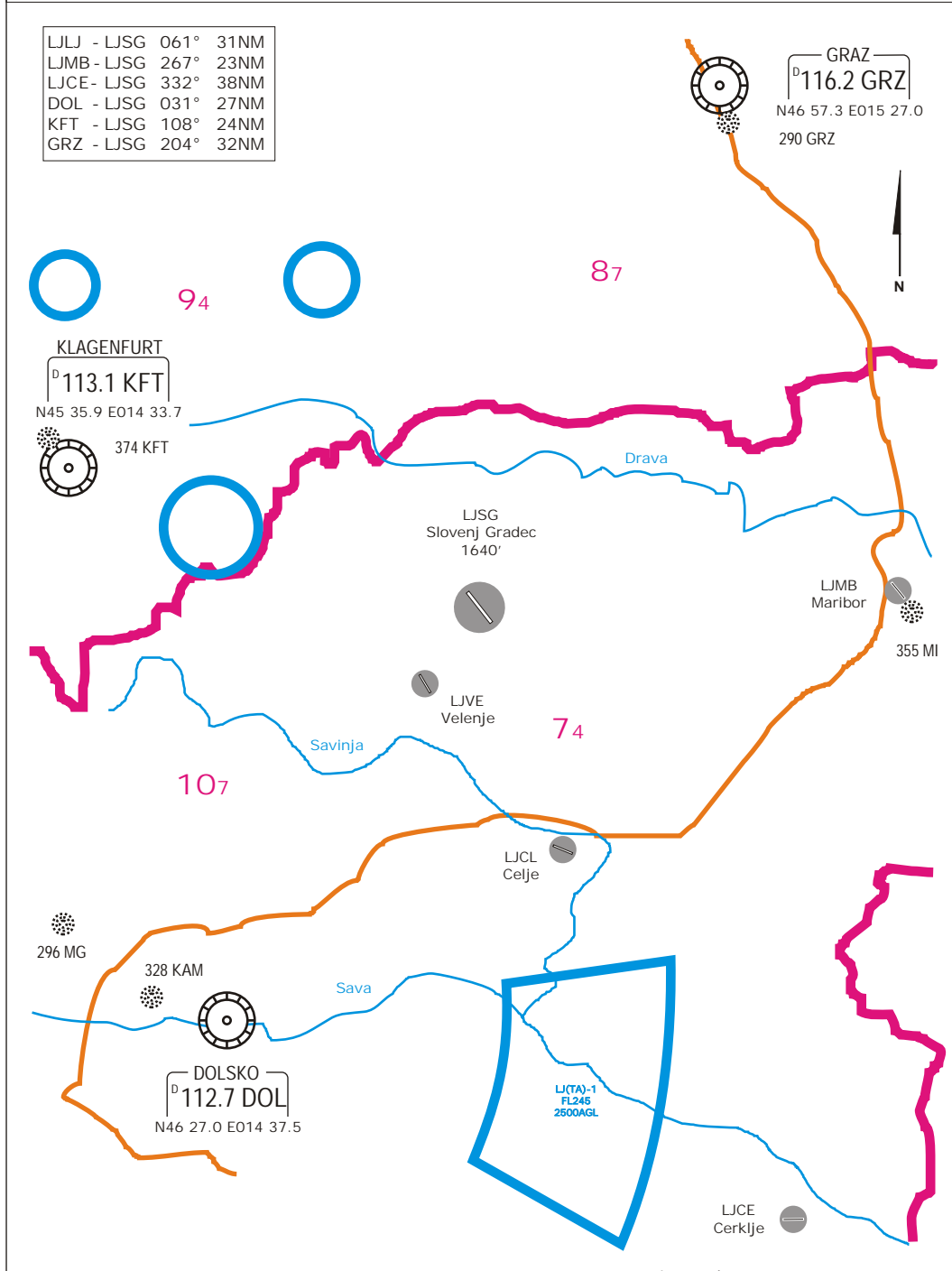
6

GA

Apt Elev 1640' 500m	Alt Set: MB VAR 1.0°E	Position: N46 28.3 E015 07.0	AFIS: 123.500
---------------------------	--------------------------	---------------------------------	---------------

RUNWAY 14-32 INFORMATION: Dimensions: 1200 x 23m TODA: 1250m
Surface: Asphalt Direction: 142° - 322° LDA: 1100m

LJLJ - LJSG	061°	31NM
LJMB - LJSG	267°	23NM
LJCE - LJSG	332°	38NM
DOL - LJSG	031°	27NM
KFT - LJSG	108°	24NM
GRZ - LJSG	204°	32NM



Reporting Points:		Legend	
N	N46° 33.8 E015° 04.3		Country Border
E	N46° 26.5 E015° 12.0		Highway
S	N46° 22.6 E015° 04.0		Primary Road
w	N46° 33.0 E014° 57.6		River
	Twin tower church		Railway
	MISLINJA Village		
	SOSTANJ Steam power station		
	RAVNE Iron works		

IVAO-SI 2006, ALL RIGHTS RESERVED

FOR FLIGHT SIMULATION PURPOSES ONLY