

LJPZ / POW
SID RWY 33

4-2

06 May 10

PORTOROZ, SLOVENIA
Secovlje

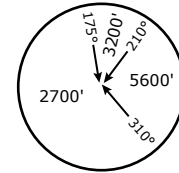
PORTOROZ Tower
124.875

PORTOROZ Approach
124.875

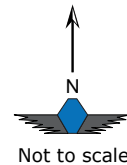
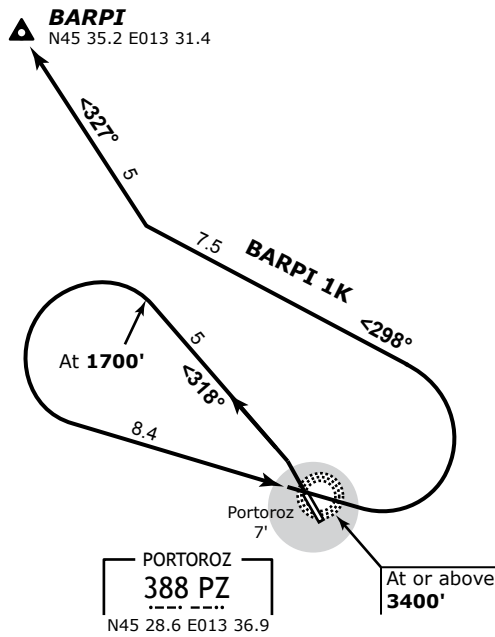
BARPI 1K (BARPI ONE KILO)
Departure RWY 33

Only available for route P28.

Trans Alt: **10500'**
VAR: **1.0° E**



MSA 25 NM
from **PZ Lctr**



This SID requires minimum climb gradient of 5.5% (334' per NM) up to 1700'.

Gnd speed [kts]	75	100	150	200	250	300
334' per NM	418	557	835	1114	1392	1671

SID	Rwy	Routing	Altitude Restrict.
BARPI 1K	33	Climb on track 318° to 1700' , turn left to PZ Lctr; overhead PZ Lctr turn left onto heading 298°; intercept PZ QDR 327° to BARPI.	Cross PZ Lctr at or above 3400' .

© IVAO SLOVENIA

FOR FLIGHT SIMULATION PURPOSES ONLY