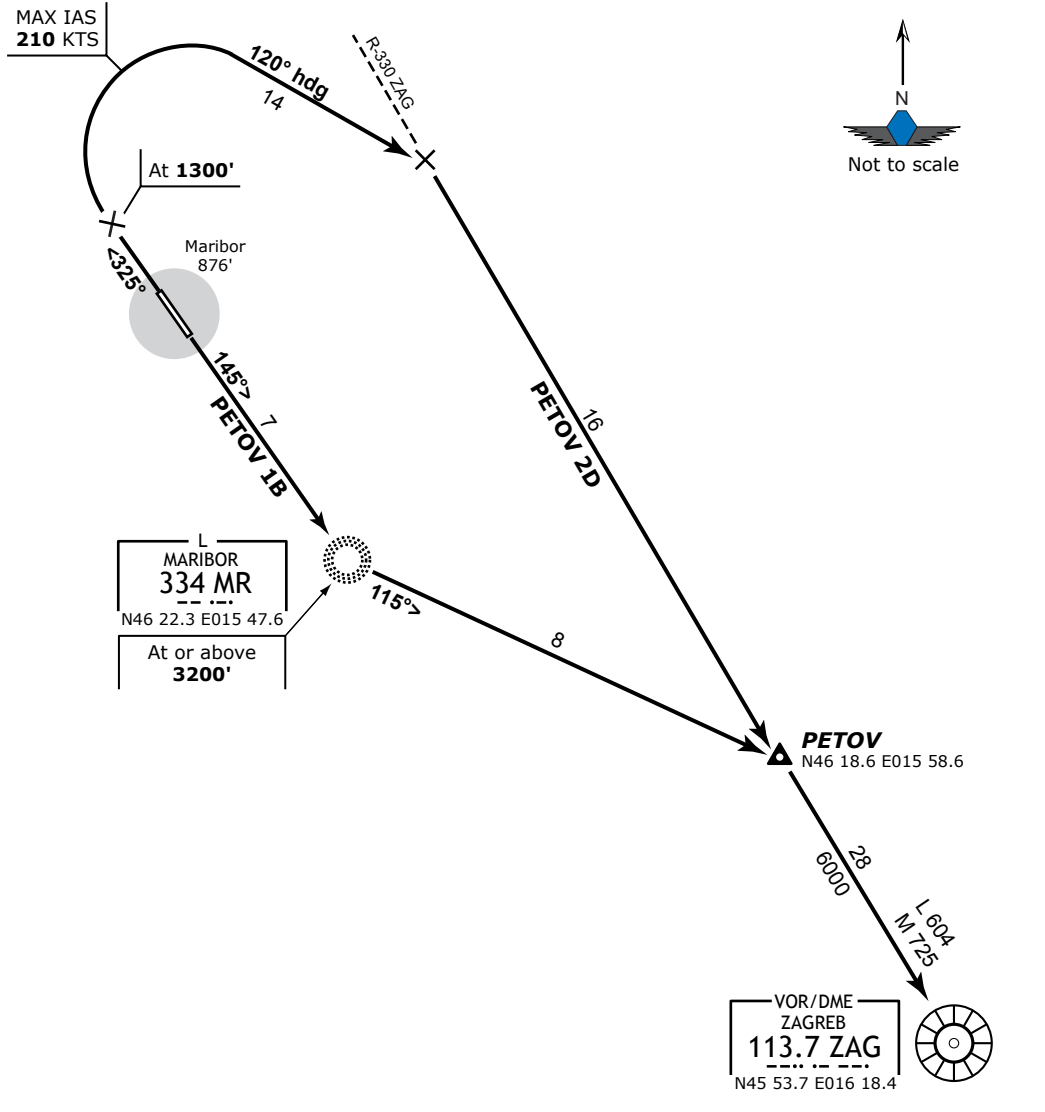


MARIBOR Tower 119.200	MARIBOR Approach 119.200	Trans Alt: 10500' Trans Level: By ATC VAR: 1.0° E
--------------------------	-----------------------------	--

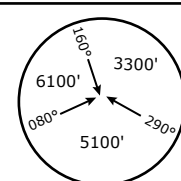
PETOV 1B (PETOV ONE BRAVO),
PETOV 2D (PETOV TWO DELTA)
Departures RWY 33/15



PETOV 1B SID requires a minimum climb gradient of **328 FT/NM [5.4%]** up to **6000'**.

PETOV 2D SID requires a minimum climb gradient of **304 FT/NM [5%]** up to **1800'**.

Gnd speed [kts]	75	100	150	200	250	300
304' per NM	380	506	760	1013	1266	1519
328' per NM	410	547	820	1094	1367	1641



SID	Rwyt	Routing	Altitude Restrict.
PETOV 1B	15	To MR Lctr, turn LEFT overhead MR Lctr onto MR Lctr QDR 115°, climbing to PETOV.	Cross MR Lctr at or above 3200' .
PETOV 2D	33	Climb straight ahead to 1300' , turn RIGHT (max IAS 210 KTS) 120° heading, intercept ZAG R-330 climbing via PETOV to ZAG VOR/DME.	