

**LJMB / MBX**  
Lctr RWY 33

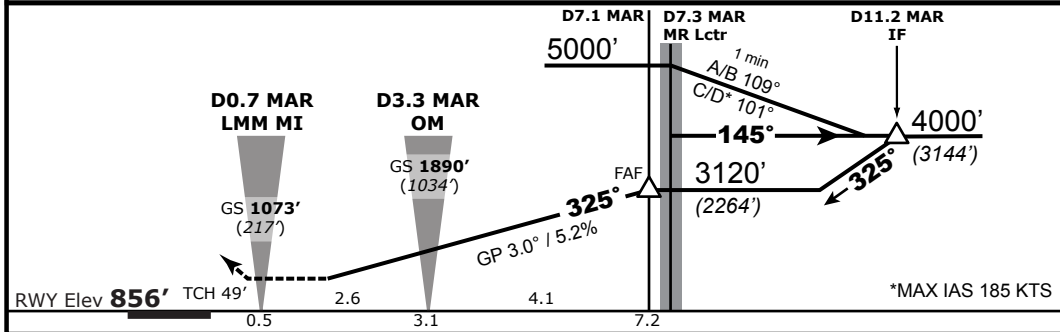
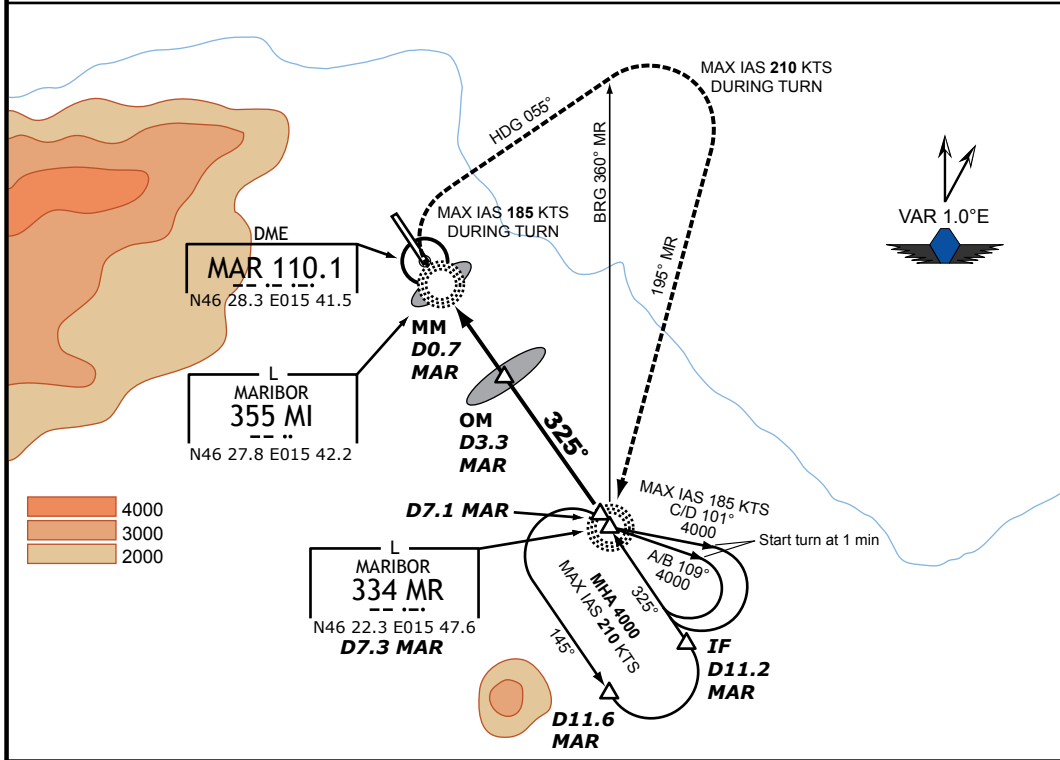
**3-2**  
06 May 10

**MARIBOR, SLOVENIA**  
Orehova vas

MARIBOR Tower 119.200		MARIBOR Approach 119.200			<p>MSA 25 NM from MR Lctr</p>
Lctr MR <b>334</b>	Final App Crs <b>325°</b>	Minimum Alt MR Lctr <b>3120'</b> (2264')	LOCATOR MDA(H) <b>1200'</b> (344')	Apt Elev 876' RWY <b>856'</b>	

**MISSED APPROACH:** At MM Lctr turn **right** (max IAS 185 kts in turn) onto heading 055°, at bearing 360° MR turn **right** (max IAS 210 kts in turn) onto track 195° inbound MR Lctr climbing to **4000'** and hold.

Alt Set: hPa      Trans Level: By ATC      Trans Alt: 10500'



OCA (H)	A	B	C	D	<p>HIALS PAPI</p>	
Straight-in Approach	Locator					<p><b>1293'</b> (427')</p>
Circling	<b>1280'</b> (404')	<b>1570'</b> (694')	<b>1830'</b> (954')	<b>2000'</b> (1124')		

<p>Circling <b>SouthWest</b> of aerodrome <b>NOT AUTHORIZED</b></p>	MAR GP/DME	D2.0	D3.0	D4.0	D5.0	D6.0			
	ALT (HGT)	<b>1490'</b> (634')	<b>1810'</b> (954')	<b>2130'</b> (1274')	<b>2450'</b> (1594')	<b>2760'</b> (1904')			
	Gnd speed (KT)		70	90	100	120	140	160	180
Descent Angle [3.0°] or descent gradient [5.2%] (FT/MIN)			377	484	538	646	753	861	969

© IVAO SLOVENIA

**FOR FLIGHT SIMULATION PURPOSES ONLY**