

LJLJ / LJU  
SID RWY 13

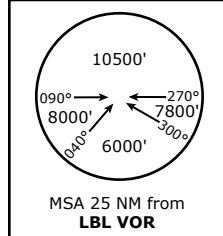
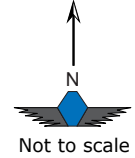
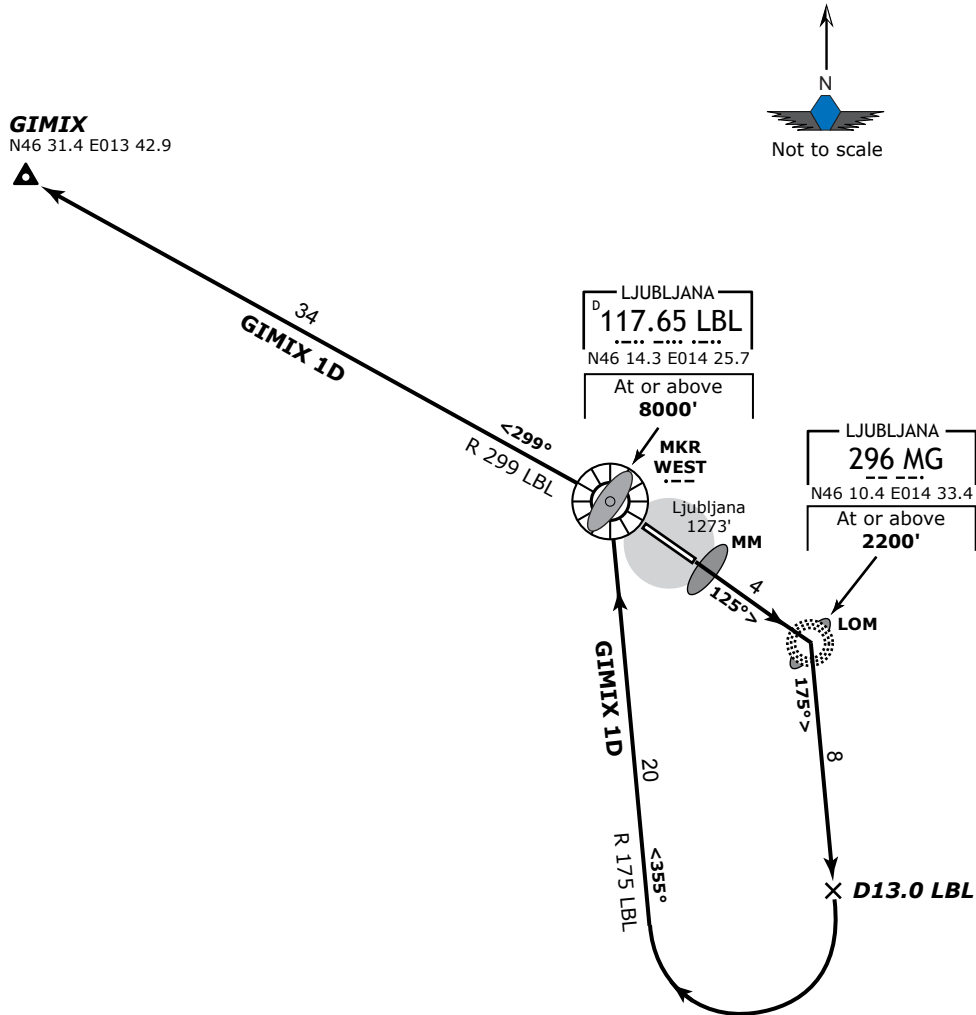
4-6

LJUBLJANA, SLOVENIA  
Brnik

06 May 10

LJUBLJANA Tower 118.000 118.750	LJUBLJANA Radar 135.275 136.000	Trans Alt: <b>10500'</b> Trans Level: <b>By ATC</b> VAR: <b>1.0° E</b>
------------------------------------	------------------------------------	--

GIMIX 1D (GIMIX ONE DELTA)  
Departure RWY 13



SID	Rwy	Routing	Altitude Restrict.
GIMIX 1D	13	Climb straight ahead to MG Lctr, turn RIGHT, climb on track 175°, at D13 LBL turn RIGHT, intercept R-175 to LBL. At LBL turn LEFT, climb on R-299 from LBL to GIMIX Int.	Cross MG Lctr at or above <b>2200' MSL</b> , LBL at or above <b>9500' MSL</b> .

© IVAO SLOVENIA

FOR FLIGHT SIMULATION PURPOSES ONLY