

LJLJ / LJU  
SID RWY 31

4-5

LJUBLJANA, SLOVENIA  
Brnik

06 May 10

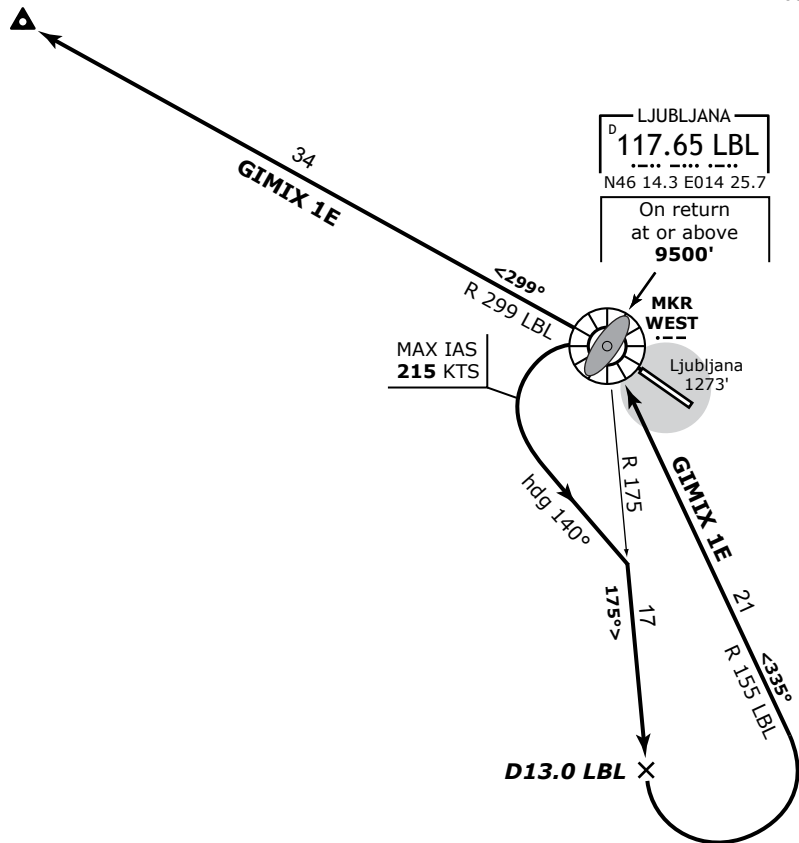
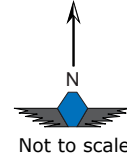
LJUBLJANA Tower  
118.000 118.750

LJUBLJANA Radar  
135.275 136.000

Trans Alt: **10500'**  
Trans Level: **By ATC**  
VAR: **1.0° E**

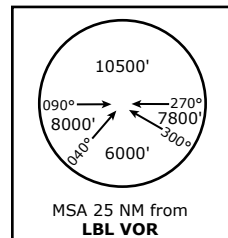
GIMIX 1E (GIMIX ONE ECHO)  
Departure RWY 31

**GIMIX**  
N46 31.4 E013 42.9



This SID requires minimum climb gradient of **273 ft per NM [4.5%]** up to **3700'**.

Gnd speed (kts)	75	100	150	200	250	300
273' per NM (ft/min)	342	456	684	911	1139	1367



SID	Rwy	Routing	Altitude Restrict.
<b>GIMIX 1E</b>	<b>31</b>	Climb on runway heading to LBL (MKR WEST), turn LEFT (MAX IAS 210 KTS), heading 140°, intercept and climb on R-175 LBL. At D13 LBL turn LEFT, intercept R-155 inbound LBL. Overhead LBL turn LEFT, climb on R-299 LBL to GIMIX Int.	Cross LBL on return at <b>9500' MSL</b> or above.

© IVAO SLOVENIA

**FOR FLIGHT SIMULATION PURPOSES ONLY**