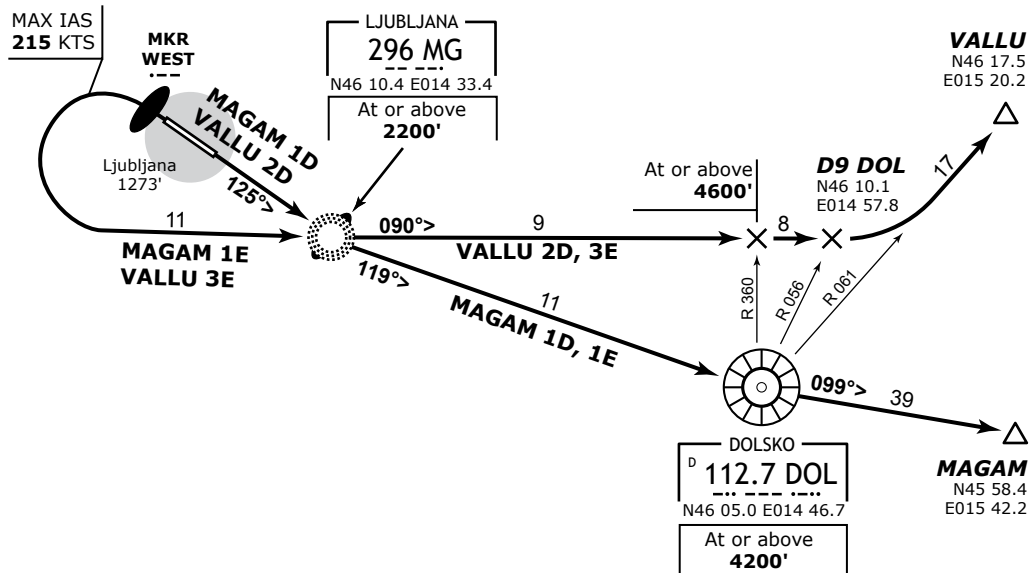
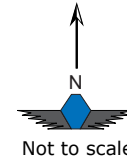


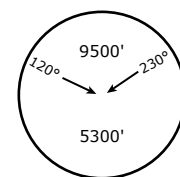
LJUBLJANA Tower 118.000 118.750	LJUBLJANA Radar 135.275 136.000	Trans Alt: <b>10500'</b> Trans Level: <b>By ATC</b> VAR: <b>1.0° E</b>
------------------------------------	------------------------------------	--

MAGAM 1D (MAGAM ONE DELTA), MAGAM 1E (MAGAM ONE ECHO),  
VALLU 2D (VALLU TWO DELTA), VALLU 3E (VALLU THREE ECHO)  
Departures RWY 13/31



All these SIDs require a minimum climb gradient of **255' per NM [4.2%]** up to **2500'**, when departing **Rwy 31**.

Gnd speed [kts]	75	100	150	200	250	300
255' per NM	319	425	638	851	1063	1276



SID	Rwy	Routing	Altitude Restrict.
<b>MAGAM 1D</b>	<b>13</b>	To MG Lctr, turn LEFT, 119° bearing to DOL, turn LEFT, intercept R-099 DOL to MAGAM Int.	Cross MG Lctr at or above <b>2200'</b> , DOL VOR/DME at or above <b>4200'</b> .
<b>MAGAM 1E</b>	<b>31</b>	To MKR WEST, turn LEFT (MAX IAS 215 KTS) to MG Lctr, turn LEFT, 119° bearing to DOL, turn LEFT, intercept R-099 DOL to MAGAM Int.	
<b>VALLU 2D</b>	<b>13</b>	To MG Lctr, turn LEFT, 090° bearing, at R-056 D9 DOL turn LEFT, intercept R-061 DOL to VALLU Int.	Cross MG Lctr at or above <b>2200'</b> , DOL R-360 at or above <b>4600'</b> .
<b>VALLU 3E</b>	<b>31</b>	To MKR WEST, turn LEFT (MAX IAS 215 KTS) to MG Lctr, turn LEFT, 090° bearing, at R-056 D9 DOL turn LEFT, intercept R-061 DOL to VALLU Int.	