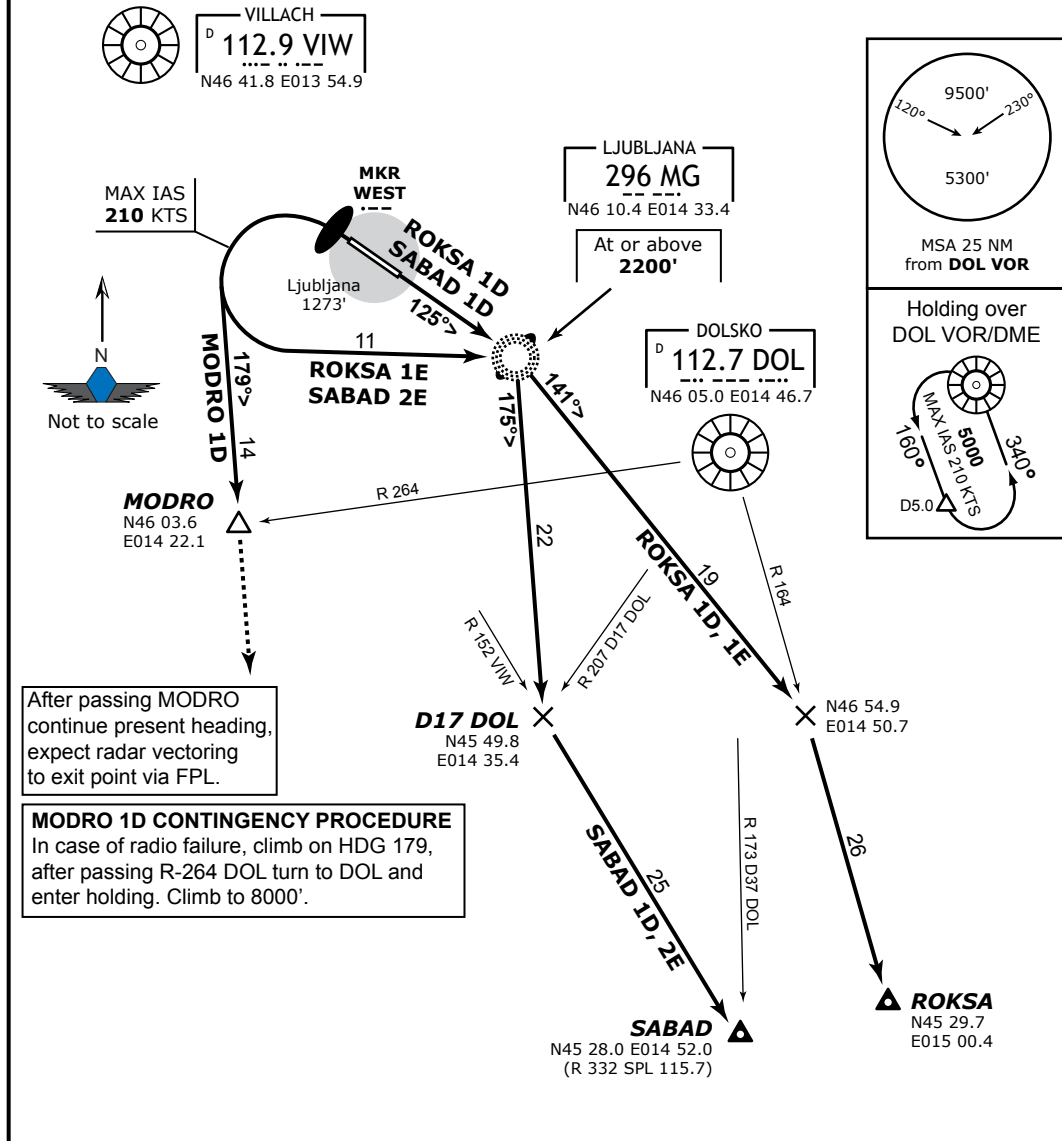


LJUBLJANA Tower 118.000 118.750	LJUBLJANA Radar 135.275 136.000	Trans Alt: <b>10500'</b> Trans Level: <b>By ATC</b> VAR: <b>1.0° E</b>
------------------------------------	------------------------------------	--

**MODRO 1D (MODRO ONE DELTA),  
ROKSA 1D (ROKSA ONE DELTA), ROKSA 1E (ROKSA ONE ECHO),  
SABAD 1D (SABAD ONE DELTA), SABAD 2E (SABAD TWO ECHO)  
Departures RWY 13/31**



SID	Rwy	Routing	Altitude Restrict.
<b>MODRO 1D</b>	<b>31</b>	To MKR WEST, turn LEFT heading 179, climbing to 6000 FT. MAX IAS 210 KTS during turn and up to 6000 FT to MODRO.	Procedure Design Climb Gradient <b>4.9%</b>
<b>ROKSA 1D</b>	<b>13</b>	To MG Lctr, turn RIGHT, 141° bearing, intercept R-164 DOL to ROKSA Int.	Cross MG Lctr at or above <b>2200'</b> .
<b>ROKSA 1E</b>	<b>31</b>	To MKR WEST, turn LEFT (MAX IAS 215 KTS) to MG Lctr, turn RIGHT, 141° bearing, intercept R-164 DOL to ROKSA Int.	
<b>SABAD 1D</b>	<b>13</b>	To MG Lctr, turn RIGHT, 175° bearing, intercept R-152 VIW (R-332 SPL inbound) to SABAD Int.	
<b>SABAD 2E</b>	<b>31</b>	To MKR WEST, turn LEFT (MAX IAS 215 KTS) to MG Lctr, turn RIGHT, 175° bearing, intercept R-152 VIW (R-332 SPL inbound) to SABAD Int.	