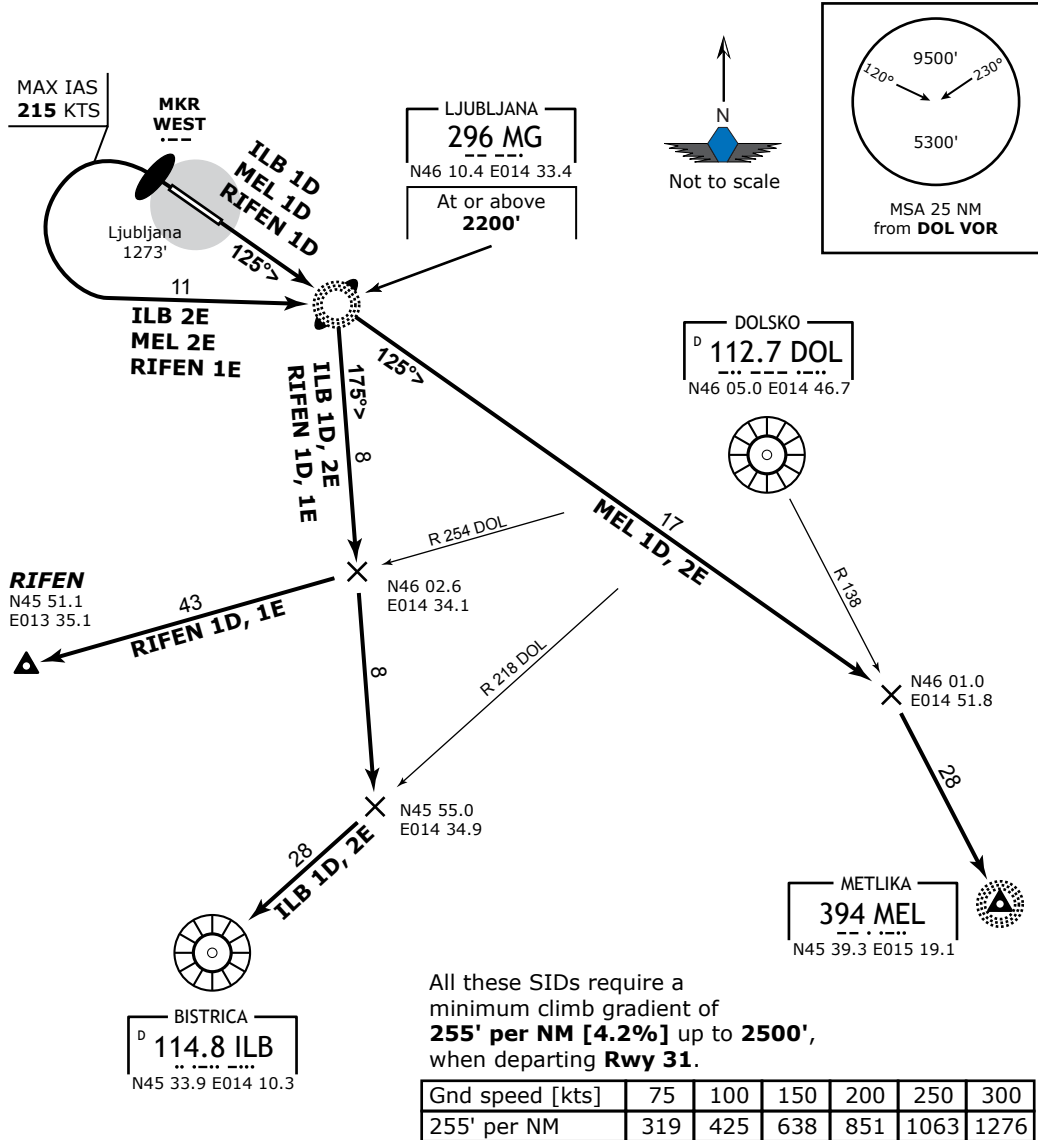


06 May 10

LJUBLJANA Tower 118.000 118.750	LJUBLJANA Radar 135.275 136.000	Trans Alt: <b>10500'</b> Trans Level: <b>By ATC</b> VAR: <b>1.0° E</b>
------------------------------------	------------------------------------	--

ILB 1D (BISTRICA ONE DELTA), ILB 2E (BISTRICA TWO ECHO),  
MEL 1D (METLIKA ONE DELTA), MEL 2E (METLIKA TWO ECHO),  
RIFEN 1D (RIFEN ONE DELTA), RIFEN 1E (RIFEN ONE ECHO),  
Departures RWY 13/31



SID	Rwy	Routing	Altitude Restrict.
ILB 1D	13	To MG Lctr, turn RIGHT, 175° bearing, intercept R-218 DOL to ILB VOR/DME.	Cross MG Lctr at or above <b>2200'</b> .
ILB 2E	31	To MKR WEST, turn LEFT (MAX IAS 215 KTS) to MG Lctr, turn RIGHT, 175° bearing, intercept R-218 DOL to ILB VOR/DME.	
MEL 1D	13	To MG Lctr, 125° bearing, intercept R-138 DOL to MEL NDB.	Cross MG Lctr at or above <b>2200'</b> .
MEL 2E	31	To MKR WEST, turn LEFT (MAX IAS 215 KTS) to MG Lctr, 125° bearing, intercept R-138 DOL to MEL NDB.	
RIFEN 1D	13	To MG Lctr, turn RIGHT, 175° bearing, intercept R-254 DOL to RIFEN Int.	
RIFEN 1E	31	To MKR WEST, turn LEFT (MAX IAS 215 KTS) to MG Lctr, turn RIGHT, 175° bearing, intercept R-254 DOL to RIFEN Int.	

© IVAO SLOVENIA