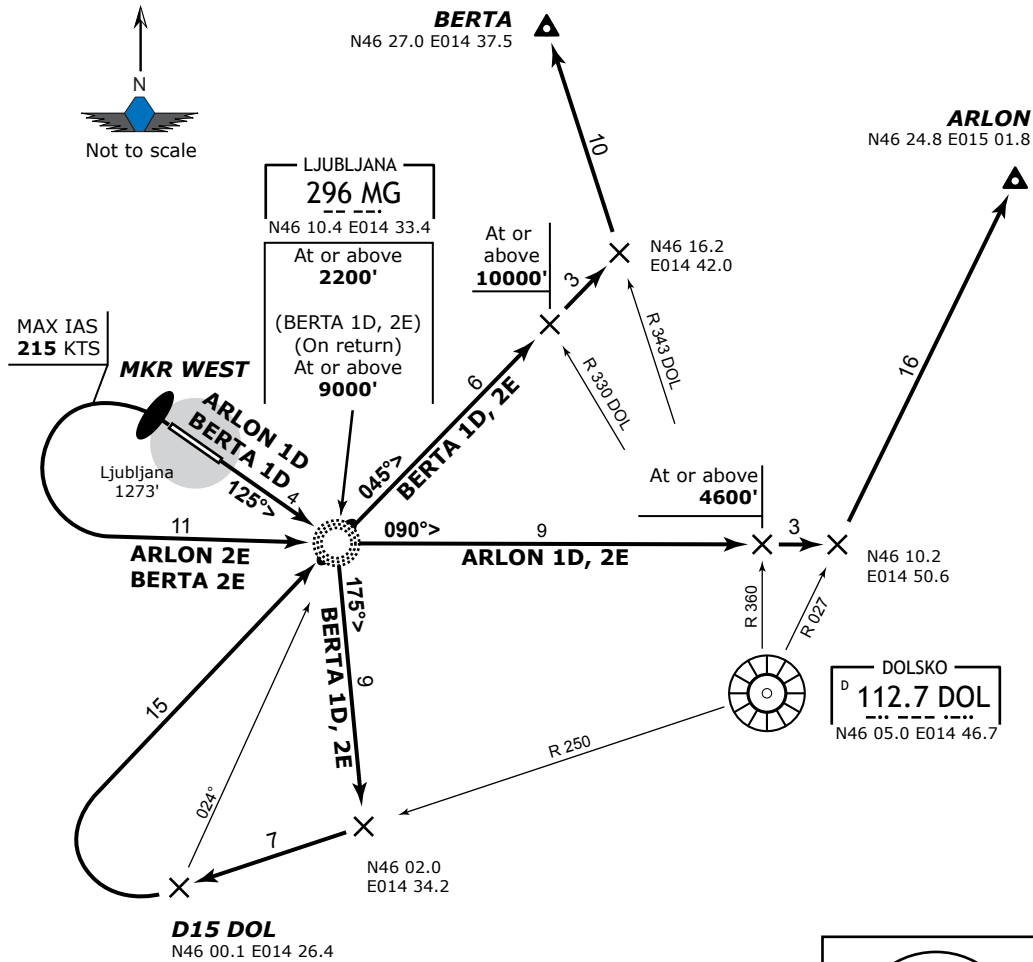


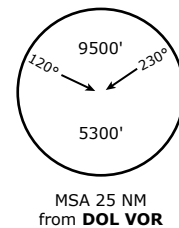
LJUBLJANA Tower 118.000 118.750	LJUBLJANA Radar 135.275 136.000	Trans Alt: 10500' Trans Level: By ATC VAR: 1.0° E
------------------------------------	------------------------------------	--

ARLON 1D (ARLON ONE DELTA), ARLON 2E (ARLON TWO ECHO),
BERTA 1D (BERTA ONE DELTA), BERTA 2E (BERTA TWO ECHO)
Departures RWY 13/31



All these SIDs require a minimum climb gradient of **255' per NM [4.2%]** up to **2500'**, when departing **Rwy 31**.

Gnd speed [kts]	75	100	150	200	250	300
255' per NM	319	425	638	851	1063	1276



SID	Rwy	Routing	Altitude Restrict.
ARLON 1D	13	To MG Lctr, turn LEFT, 090° bearing, intercept R-027 DOL to ARLON Int.	Cross MG Lctr at or above 2200' , DOL R-360 at or above 4600' .
ARLON 2E	31	To MKR West, turn LEFT (MAX IAS 215 KTS) to MG Lctr, turn LEFT, 090° bearing, intercept R-027 DOL to ARLON Int.	Cross MG Lctr at or above 2200' , MG Lctr on return at or above 9000' , DOL R-330 at or above 10000' .
BERTA 1D	13	To MG Lctr, turn RIGHT, 175° bearing, intercept DOL R-250 to D15.0 DOL (024° bearing to MG Lctr), turn RIGHT to MG Lctr, 045° bearing, intercept R-343 DOL to BERTA Int.	Cross MG Lctr at or above 2200' , MG Lctr on return at or above 9000' , DOL R-330 at or above 10000' .
BERTA 2E	31	To MKR West, turn LEFT (MAX IAS 215 KTS) to MG Lctr, turn RIGHT, 175° bearing, intercept R-250 DOL to D15.0 DOL (024° bearing to MG Lctr), turn RIGHT to MG Lctr, 045° bearing, intercept R-343 DOL to BERTA Int.	Cross MG Lctr at or above 2200' , MG Lctr on return at or above 9000' , DOL R-330 at or above 10000' .