

LJLJ / LJU
NDB Lctr Rwy 31

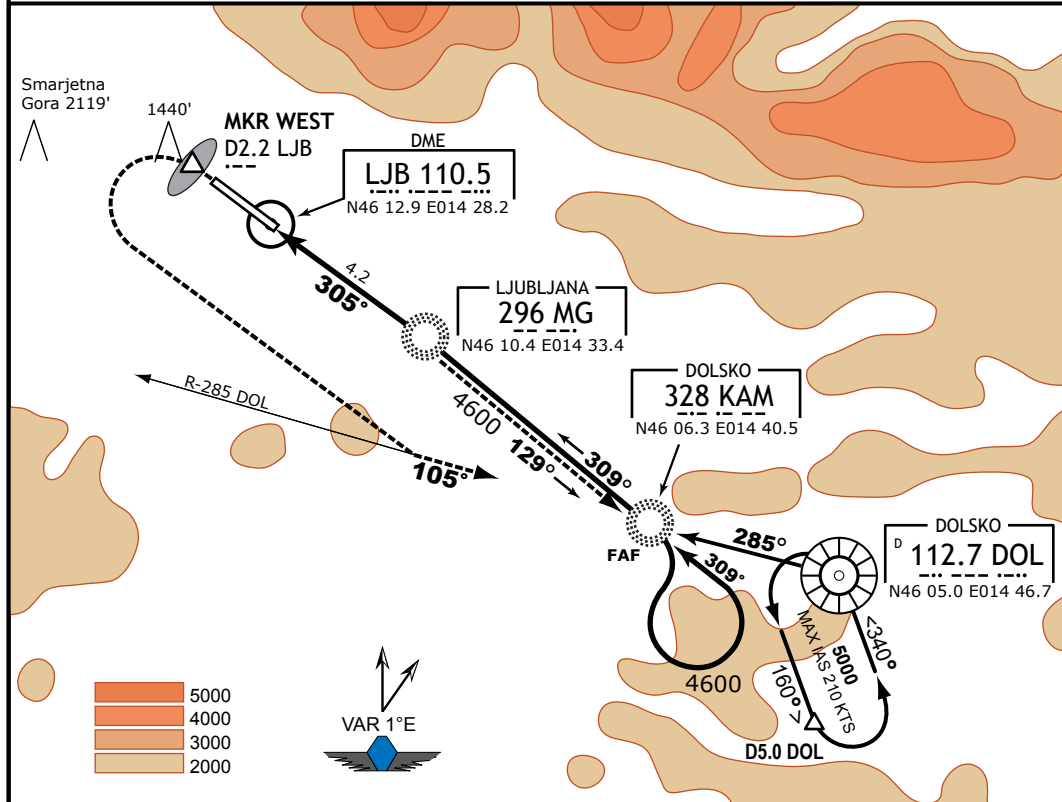
3-3
06 May 10

LJUBLJANA, SLOVENIA
Brnik

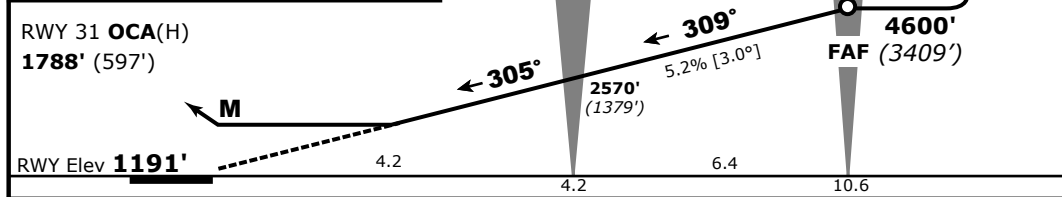
Ljubljana Radar 135.275 136.000		Ljubljana Tower 118.000 118.750			<p>MSA 25 NM from DOL VOR</p>
Lctr MG 296	Final App Crs 305°	Minimum Alt KAM NDB 4600' (3409')	MDA(H) 1790' (599')	Apt Elev 1273' RWY 1191'	

MISSED APPROACH: Climb straight ahead to MKR WEST/D2.2 LJB, then turn left to intercept and follow R-285 inbound DOL climbing to 6000' and hold. Climb to 2500' prior to level acceleration.

Alt Set: hPa Trans Level: By ATC Trans Alt: 10500'



Due to high terrain north of aerodrome, do not overshoot track 309° to FAF KAM NDB.



RWY 31 OCA(H) 1788' (597')	RWY Elev 1191'						HIALS-II
Gnd speed (Kts)	90	100	120	140	160	180	
Desc. grad. 5.2% or angle [3.0°]	484	538	646	753	861	969	
KAM to MG (min:sec)	4:16	3:50	3:12	2:45	2:24	2:08	
MG Lctr to MAP [4.2] (min:sec)	2:48	2:31	2:06	1:48	1:35	1:24	

STRAIGHT-IN LANDING RWY 31			CIRCLE-TO-LAND		
MDA(H) 1790' (599')			Circling Northeast of aerodrome NOT AUTHORIZED		
	ALS out	Max Kts	MDA(H)	VIS	
A	RVR 1000m	100	1790' (517')	1500m	
B	RVR 1500m	135	1970' (697')	1600m	
C	RVR 1200m	180	2610' (1337')	2400m	
D	RVR 1600m	205	2710' (1437')	3600m	

FOR NIGHT CIRCLING
pilot should establish visual contact with the lights on top of Smarjetna Gora and on top of the church on final approach