

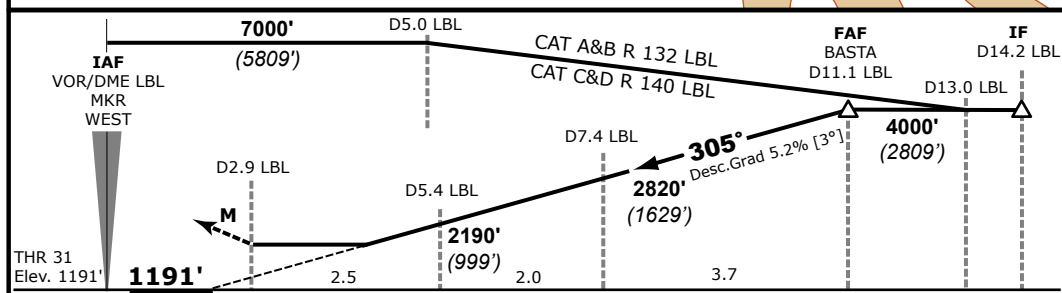
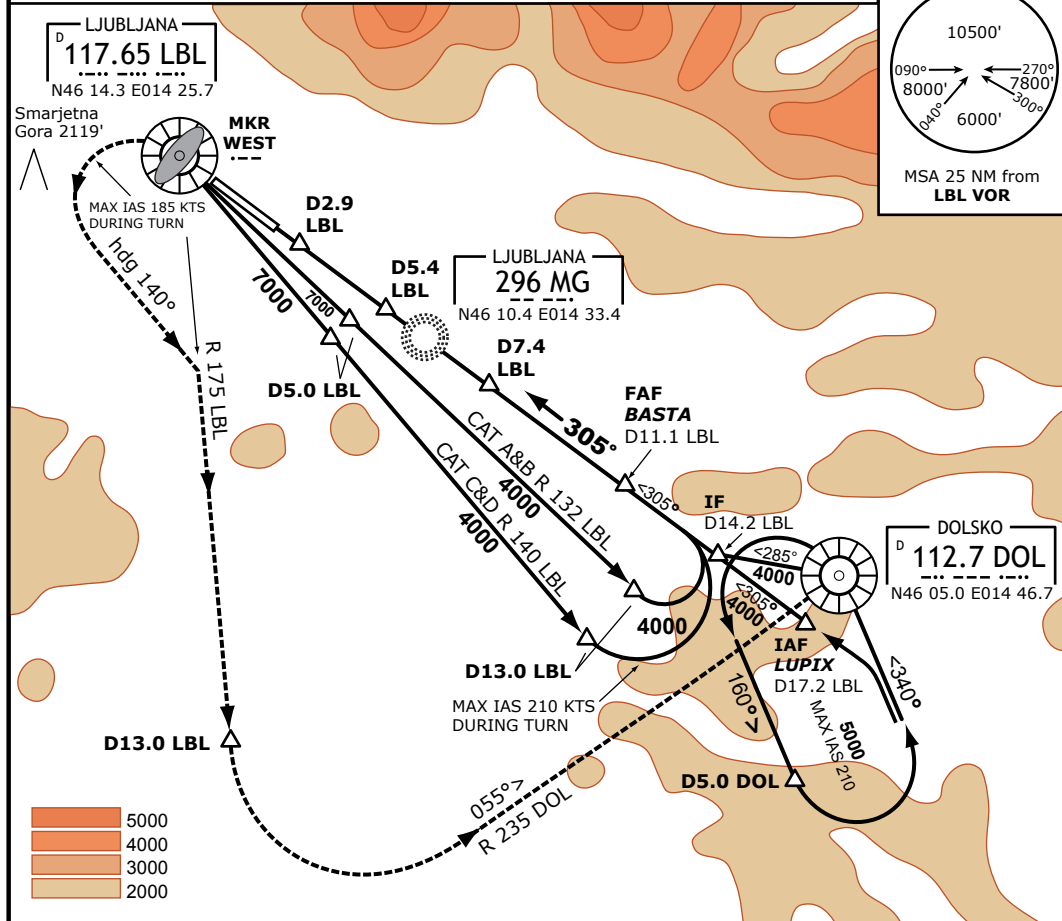
LJLJ / LJU
VOR/DME Rwy 31

3-2
 06 May 10

LJUBLJANA, SLOVENIA
 Brnik

LJUBLJANA Radar 135.275 136.000		LJUBLJANA Tower 118.000 118.750			<p>MSA 25 NM from DOL VOR</p>
VOR LBL 117.65	Final App Crs 305°	Minimum Alt D11.1 LBL 4000' (2809')	MDA(H) Refer to Minimums	Apt Elev 1273' RWY 1191'	

MISSED APPROACH:
 Climb **straight ahead**, at **LBL (MKR WEST)** turn **left** (max IAS 185 kts), heading **140°**, intercept **R-175** from **LBL**, at **D13.0 LBL** turn **left**, intercept **R-235** to **DOL** and hold. Climb and maintain **6000'**.



RECOMMENDED PROFILE - Descent gradient 5.2 % or descent angle [3.0°]										
LBL DME	10.0	9.0	8.0	7.0	6.0		5.0			
Altitude	3640'	3320'	3010'	2690'	2380'	2060'				
OCA (H)	A	B	C*	D						
Straight-in Approach	Alt 1620' (429')	1620' (429')	1760' (569')	1760' (569')						
Circling	Alt 1790' (517')	1970' (697')	2610' (1337')	2710' (1437')						
CIRCLE-TO-LAND Circling NorthEast of aerodrome NOT AUTHORIZED	Gnd speed [Kts]			70	90	100	120	140	160	180
	Descent gradient [5.2%]			377	484	538	646	753	861	969