

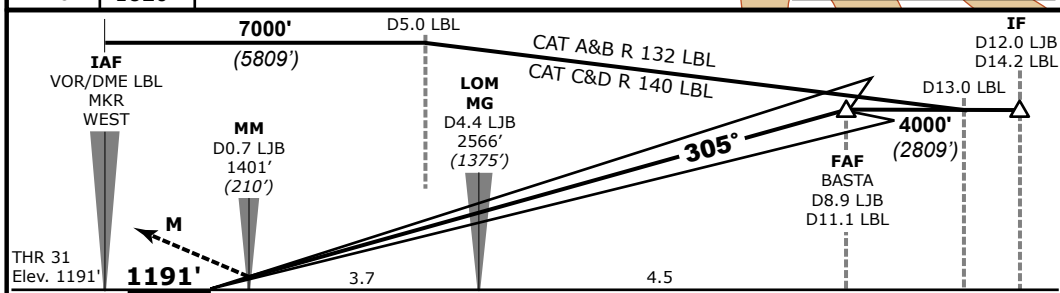
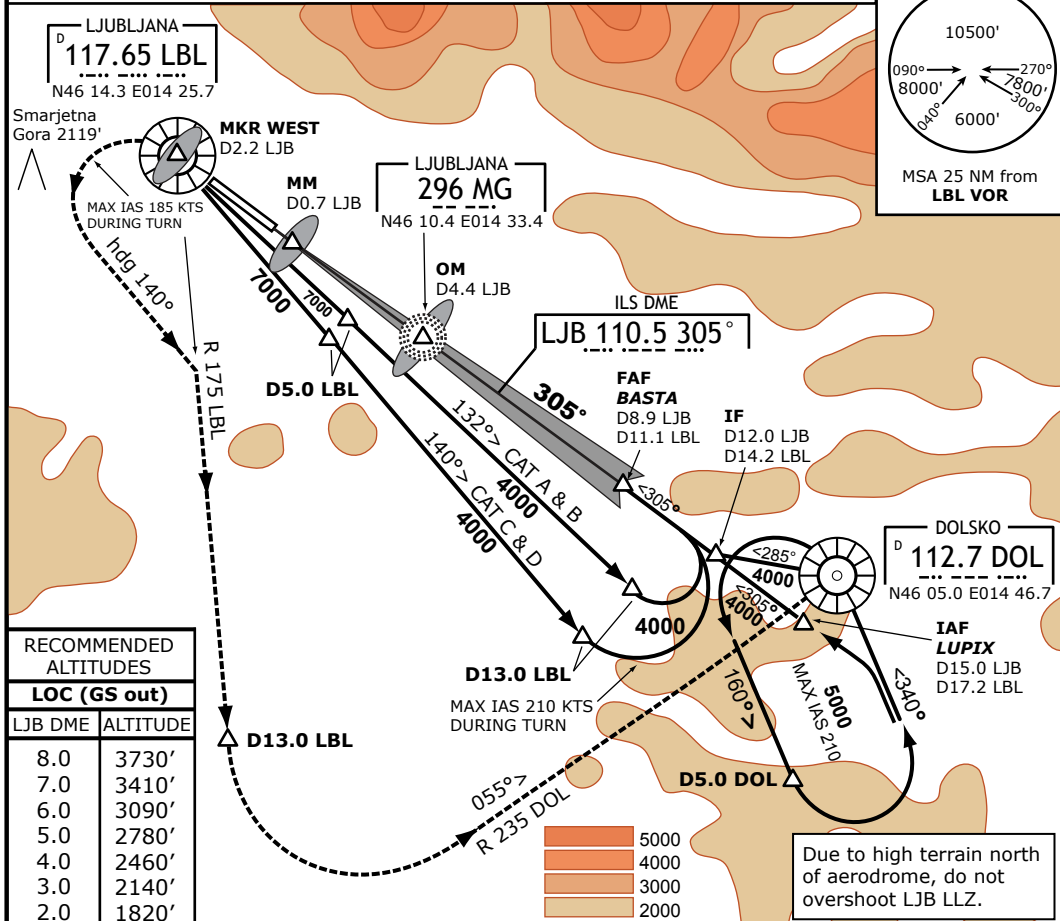
LJLJ / LJU
ILS Rwy 31

3-1
06 May 10

LJUBLJANA, SLOVENIA
Brnik

LJUBLJANA Radar 135.275 136.000		LJUBLJANA Tower 118.000 118.750		
LOC LJB 110.5	Final App Crs 305°	GS LOM 2566' (1375')	ILS DA(H) 1391' (200')	Apt Elev 1273' RWY 1191'
MISSED APPROACH: Climb straight ahead, at MW (D2.2 LJB) turn left (max IAS 185kt), heading 140°, intercept R-175 from LBL, at D13.0 LBL turn left, intercept R-235 to DOL and hold. Climb and maintain 6000'.				<p>MSA 25 NM from DOL VOR</p>

VAR 1°E Alt Set: hPa Trans Level: By ATC Trans Alt: 10500'



OCA (H)		A	B	C*	D	HIALS-II
Straight-in Approach	CAT II	Radio ALT	1250' (59')	1263' (72')	1276' (85')	1290' (99')
	CAT I	Press. ALT	1345' (154')	1358' (167')	1368' (177')	1385' (194')
GP. INOP		1722' (531')				<p>CAT IIIB (RVR 125m) Operations approved.</p>
Circling		1740' (467')	1970' (697')	2610' (1337')	2710' (1437')	

* Alternate Circling minima for CAT C MAX IAS 160 kts: 2040' (767')	<p>Ground speed (Kts)</p>	70	90	100	120	140	160	180
Circling NorthEast of aerodrome NOT AUTHORIZED		ILS GS 3.0° or LOC descent gradient 5.2%	377	485	539	647	755	862

© IVAO SLOVENIA

FOR FLIGHT SIMULATION PURPOSES ONLY